

# GLOUCESTER COUNTY TODAY

ALL THE NEWS YOU NEED AND MORE FROM GLOUCESTER COUNTY



## GLOUCESTER COUNTY EMS EXPANDS SCOPE OF PRACTICE

Gloucester County EMS in conjunction with the Gloucester County Commissioners and Liaison Denise DiCarlo are proud to announce the launch of an Expanded Scope of Practice training Program, aimed at equipping emergency medical technicians (EMTs) with vital new skills to enhance patient care and improve outcomes in critical situations. This program, conducted by the GCEMS Training Academy, blends online and in-person training to teach the use of lifesaving tools and techniques, including glucometers, Continuous Positive Airway Pressure (CPAP) devices, albuterol nebulizer treatments, and Positive-End Expiratory Pressure (PEEP) manual ventilators.

## NEW SKILLS, ENHANCED PATIENT OUTCOMES

### Glucometer Use

The ability to measure blood glucose levels allows EMTs to quickly identify whether a patient is experiencing hypoglycemia or hyperglycemia. This prompt recognition is crucial for diabetic emergencies, as it enables the administration of appropriate treatments, such as glucose for low blood sugar or prompt transport to an advanced care facility for high blood sugar management. Early intervention can prevent severe complications such as seizures, loss of consciousness, or even permanent neurological damage.

### CPAP Devices

CPAP therapy offers significant benefits for patients experiencing severe respiratory distress due to conditions like congestive heart failure or chronic obstructive pulmonary disease (COPD). By maintaining open airways and increasing oxygen levels in the bloodstream, CPAP can rapidly reduce a patient's work of breathing and prevent further deterioration. This proactive approach minimizes the need for more invasive procedures like intubation and can significantly improve patient comfort and outcomes during transport.

### Albuterol Nebulizer Breathing Treatments

Albuterol nebulizer treatments will be used to relieve airway constriction in patients suffering from asthma attacks or other obstructive airway diseases. The medication acts quickly to relax the muscles around the airways, improving airflow and helping patients breathe more easily. Immediate administration can prevent life-threatening respiratory failure, especially in severe cases.

The Expanded Scope of Practice ensures that every ambulance in the GCEMS fleet is equipped with these new tools, offering an elevated level of care across all 23 municipalities served by GCEMS. This comprehensive coverage means that whether a resident lives in densely populated areas or more rural communities, they will receive the same high standard of emergency medical care. The addition of glucometers, CPAP devices, albuterol nebulizers, and PEEP ventilators ensures that GCEMS is prepared to address a wide range of medical emergencies with advanced treatment options, ultimately improving survival rates and reducing the likelihood of long-term complications.

### Training Program Leading the Way

The Expanded Scope of Practice training program is accredited by the NJ Office of Emergency Medical Services for EMT Continuing Education Credits and has already been adopted as a state-wide template for implementing these new practices in 9-1-1 response units. Developed by the Academy's faculty, the program is setting the standard for EMS education and practices throughout New Jersey.

## GLOUCESTER COUNTY EMS EXPANDS SCOPE OF PRACTICE (CONT.)

By expanding the skills and tools available to EMTs, Gloucester County EMS and the Gloucester County EMS EMT Training Academy continue to be at the forefront of emergency medical care, paving the way for advancements in pre-hospital emergency services across the state. The training academy's approach exemplifies best practices in EMS education and ensures that EMTs are prepared to meet the evolving needs of their communities.

### Timeline for Implementation

The implementation of this program is set to be completed before the start of 2025, with all 250 Gloucester County EMS emergency medical

technicians undergoing training. This schedule ensures that GCEMS remains ahead of state standards in pre-hospital care, while annual skills competency assessments will be conducted for all personnel to guarantee that the care delivered consistently meets the standards set by Gloucester County EMS and the state of New Jersey.

The Expanded Scope of Practice initiative is yet another demonstration of Gloucester County EMS's commitment to leading the way in emergency medical care and setting a benchmark for excellence across New Jersey. By enhancing the capabilities of EMTs and equipping every ambulance with these life-saving tools, GCEMS continues to pave the path for state-wide growth in EMS services.

## CAREGIVER APPRECIATION BREAKFAST EVENT

The Gloucester County Division of Senior Services, Caregiver Support Program is excited to host a Caregiver Appreciation Breakfast in honor of National Caregivers Day, which is celebrated on the third Friday of February each year. This event celebrates the dedication and hard work of Gloucester County caregivers and kinship caregivers who provide essential support to their families and older adults in the community.

**Date: Friday, February 21, 2025**

**Time: 9:00 a.m. to 12:00 p.m.**

**Location: The Sapphire Grand (Formerly Aulettos)  
1849 Cooper St. Deptford, NJ 08096**

Join us for a morning filled with gratitude, connection, and recognition. Enjoy a relaxing breakfast, connect with fellow caregivers, and gain new ideas and strategies for providing the best care to others and yourself. You'll also learn about the support services available through the Gloucester County Senior Services Caregiver Support Program.

This event is first come, first served, and pre-registration is required. For more information or to RSVP, please contact Gloucester County Senior Services at (856) 384-6900 or email [seniors@co.gloucester.nj.us](mailto:seniors@co.gloucester.nj.us)



## DISCOUNTS FOR VETERANS

The Gloucester County Commissioners want to thank our Veterans for their service and remind them to apply for their Veterans' Photo ID Card. The card can be used for Veterans discounts at various locations. To apply, bring your Honorable Discharge paperwork and your original DD-214 to the County Clerk's Office or to the County Store to receive your Veterans photo ID card. This service is free of charge. In addition to receiving your Veterans ID card, by getting your military discharge papers recorded with the county, Veterans will be offered the security of knowing that their discharge is permanently on record with the Clerks record room. All documents are considered confidential and can be accessed by only Veterans or their family members. For more information, visit [bit.ly/GCveterans](http://bit.ly/GCveterans).

### **Gloucester County Clerk's Office**

**1 N Broad Street**

**Woodbury, NJ 08096**

**Monday - Friday, 8:30 am until 4:00 pm.**

### **Gloucester County Store**

**1750 Deptford Center Rd**

**Deptford Mall, Upper Level**

**Deptford Township, NJ 08096**

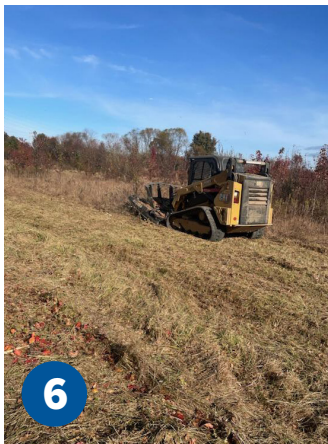
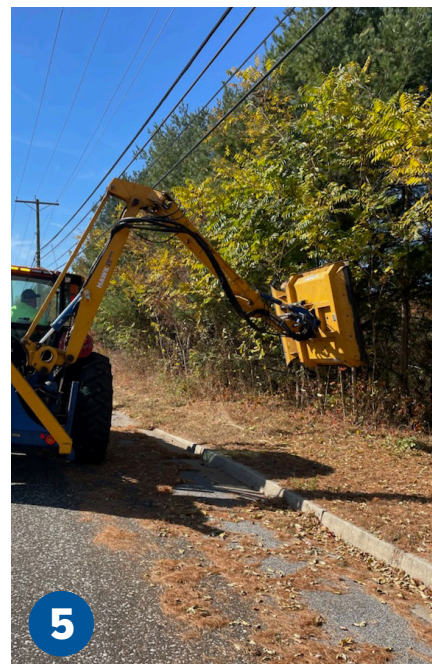
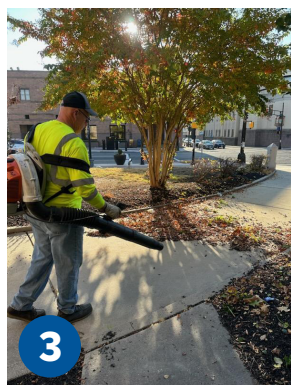
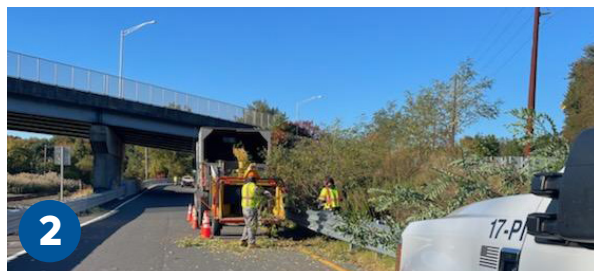
**Monday - Friday, 10 am until 8 pm**

**Saturday, 10 am until 5:30 pm**





## GLOUCESTER COUNTY ROAD WORK IN ACTION



**1 & 2:** Tree trimming and boom mowing on the SR 44 Truck Bypass leading into the Repauno Port in Greenwich.

**3 & 4:** Fall cleanup being performed at the Old Court house at the corner of CR 640 Delaware Street and SR 45 in Woodbury.

**5:** Boom mowing on CR 689 Glassboro Cross Keys Road in Washington.

**6 & 7:** Mowing and cutting down sapling trees on the land adjacent to the Veterans Cemetery along CR 555 Tuckahoe Road in Monroe.

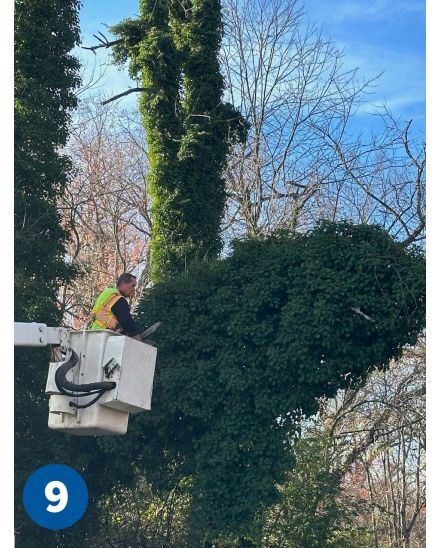
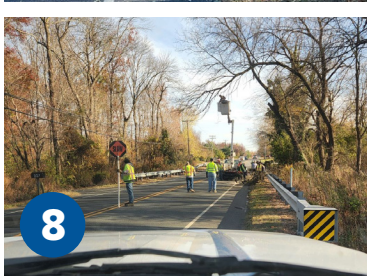
**8:** Boom mowing on 689 Cross Keys Bypass in Washington.

**9:** Roadside cleanup being performed on CR 621 Almonesson Road in Deptford.

**10:** Attempting to unclog a storm pipe on CR 680 Harmony Road in East Greenwich.



## GLOUCESTER COUNTY ROAD WORK IN ACTION



**1, 2 & 3:** Crew installing snow fence along Kings Highway in East Greenwich now that the fields have been harvested.

**4 & 5:** Clearing being performed behind the guiderail on CR 536 Spur Sicklerville Road in Monroe.

**6:** Road patching being performed on CR 603 Barnsboro Road in Deptford.

**7:** Boom mowing being performed on CR 689 Glassboro Cross Keys Road in Washington.

**8:** Tree being removed on CR 603 Blackwood Barnsboro Road in Washington.

**9:** Tree being trimming on CR 603 Blackwood Barnsboro Road in Washington.



# REPORT A POTHOLE



## FREE HEALTH SCREENINGS

The Gloucester County Department of Health provides the following free health screenings and information in front of the Gloucester County Store, located in the Deptford Mall, on the first Friday of each month from 10 am to noon. Screenings are subject to change. Talk with your healthcare providers about what tests are best for you. Questions regarding screenings? Please call (856) 218-4106.

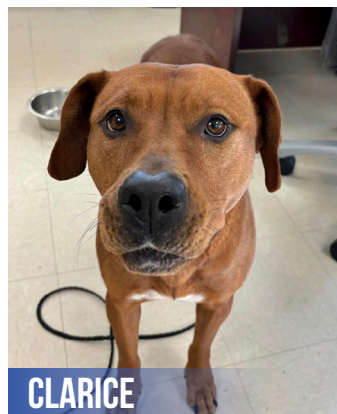
**Blood pressure** - Regular monitoring of blood pressure aids in the early detection of heart disease

**Glucose and Cholesterol Testing** - Healthy individuals over 50 should be screened for diabetes and elevated cholesterol every 1-2 years depending on risk factors.

### NEXT SCREENINGS

**January 3, 2025 – 10:00 AM - Noon**

**February 7, 2025 – 10:00 AM - Noon**



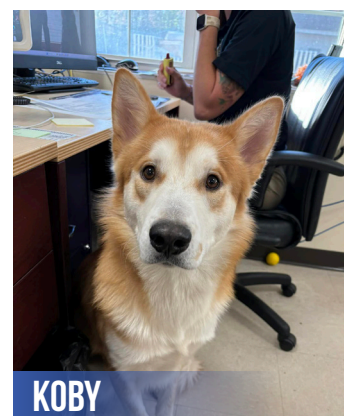
CLARICE



GATSBY



PIA



KOBY

## KEEPING THE LIGHTS ON

The Gloucester County Commissioners remind you that there are assistance programs in place to help when times get tough. The Low Income Home Energy Assistance Program (LIHEAP) helps keep families safe and healthy through initiatives that assist families with energy costs.

We provide federally/funded assistance in managing costs associated with home energy bills, weatherization and energy-related minor home repairs, and family energy crises. LIHEAP can help you stay warm in the winter and cool in the summer through programs that reduce the risk of health and safety problems that arise from unsafe heating and cooling practices.

NJ SNAP food assistance recipients automatically apply for LIHEAP; no other application is necessary. Other Gloucester County residents who feel they may qualify for LIHEAP may contact the following locations (under the 'Gloucester County' heading) at [bit.ly/GCassist](http://bit.ly/GCassist).



## TAKING CARE OF FOUR-LEGGED FRIENDS

The Gloucester County Animal Shelter functions as an impoundment and adoption facility for the public, handling over 3,000 domestic animals per year. Our Animal Control Unit is comprised of Animal Control Officers who have been certified by the New Jersey State Department of Health and perform animal control duties for the 24 municipalities of Gloucester County. We work with the local Police Department for animal cruelty issues and other animal shelters and animal control units to help out-of-county residents in contacting the proper departments for help. In addition, the GCAS has a Rabies Control program that is responsible for animal bite surveillance, animal quarantine, and specimen preparation for testing. When you adopt from the Gloucester County Animal Shelter, you're saving the life of a loving and loyal animal. You're also making space for other pets to find families of their own!

For a full list of our pets available for adoption, visit [bit.ly/GCASpets](http://bit.ly/GCASpets).





## RING IN THE NEW YEAR WITH A NEW FURRY FRIEND!

Visit to find your new best friend! The Gloucester County Animal Shelter functions as an impoundment and adoption facility for the public, handling over 3,000 domestic animals per year under the guidance of the Gloucester County Commissioners and Director Frank J. DiMarco, liaison to the shelter. Start the year off right by adopting a pet from the Gloucester County Animal Shelter! Adoption fees are \$125 for dogs and \$95 for cats, including vaccinations, spay/neuter, microchip, and more. Seniors, military veterans, and pets 6 years and older enjoy special discounts or waived fees.

Adoption hours are Monday 12-4 PM, Tuesday-Thursday 8 AM-6 PM, and Friday-Saturday 8 AM-4 PM (closed Sundays and national holidays).

Contact (856) 881-2828 (prompt #1) or email [gcas@co.gloucester.nj.us](mailto:gcas@co.gloucester.nj.us) for more info.



### Gloucester County Board of Commissioners

**Frank J. DiMarco**, *Director*  
**Jim Jefferson**, *Deputy Director*  
**Nicholas DeSilvio**  
**Denice DiCarlo**  
**Joann Gattinelli**  
**Christopher Konawel Jr.**  
**Matt Weng**



## For weekly updates from Gloucester County, subscribe to Constant Contact!

Receive all things happening in Gloucester County straight to your inbox. Scan the QR Code, email [socialmedia@co.gloucester.nj.us](mailto:socialmedia@co.gloucester.nj.us) or call (856) 853-3271 to subscribe.

♻️ Please recycle our newsletter after use. Thank you for doing your part! ♻️

The County of Gloucester complies with all state and federal rules and regulations against discrimination in admission to, access to, or operations of its programs, services, and activities. In addition, the County encourages participation of people with disabilities in its programs and activities and offers special services to all residents 60 years of age and older. Inquiries regarding compliance may be directed to the County's ADA Coordinator at (856) 384-6842/ New Jersey Relay Service 711.