

GLOUCESTER COUNTY TODAY

ALL THE NEWS YOU NEED AND MORE FROM GLOUCESTER COUNTY

UNDERSTANDING OUR ROAD SIGNS

Gloucester County has three main types of roadways with specific road signage. This information is provided to help residents understand the differences as well as which government entity is responsible for their maintenance.

County Route Signs: County route signs are pentagon shaped and are blue with gold numbers and lettering with a gold border trim. The lettering says 'Gloucester' on the top, the route number in the middle, and 'County' on the bottom. These roads are maintained by the Gloucester County Department of Public Works.



State Highway Signs: There are three different types of state route signs. Typical state route signs are black and white. These signs are in the shape of a white circle, with a black border and black numbers. There are also U.S. route signs that are in the shape of a white shield with a black border and black numbers. Finally, there are interstate highway signs that are in the shape of a shield, with red across the top, a blue body with white numbers, and a white border. These roadways vary in width from two to six lanes of traffic flow. All of these routes are maintained by the New Jersey Department of Transportation.

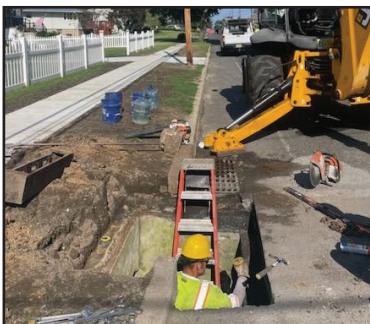


Municipal Signs: Municipal road signs vary in each town, but are generally rectangular in shape and are located on one corner at each intersection. Most municipal roads are residential streets and do not have any roadway striping. These roads are maintained by the Borough or Township where they are located.

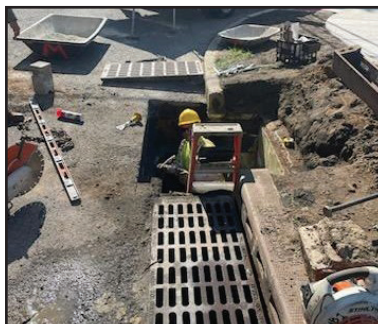


PUBLIC WORKS HARD AT WORK

Gloucester County Department of Public Works reminds residents that the members of the department continually work hard and with pride to not only make sure that County-owned properties and roadways are well-maintained and look their best but, most of all, to make sure they are safe. Here are a few recent highlights:



Sinkhole repair at the intersection of CR 642 Hessian Avenue and Lewis Terrace in West Deptford Township



Weed whacking on CR 553 Buck Road near CR 611 Dutch Row Road in Elk Township

- Continued on page 2

Public Works Continued from page 1



Street sweeping and boom mowing on CR 682 Carpenter Street in Glassboro



Boom mowing on CR 553 Buck Road near CR 611 Dutch Road in Elk Township



Boom mowing on CR 607 Tomlin Station Road in Gibbstown



Mowing on CR 667 in Harrison Township



Accessible sidewalk ramps installation at the intersection of Red Bank Avenue and Evergreen Avenue in Woodbury



Storm pipe installation and temporary storm ponds at Fries Mill Road and US 322 in Monroe



TAX RATES CONTINUE TO FALL

County Tax Rate Cut by 12.67 Cents Over Three Years



Over \$39 Million Saved Via Attrition Over 15 Years

Year	# of Positions	Salary	Longevity & Benefits	Total Savings
2022	32	\$1,944,262	\$860,486	\$2,804,748
2021	13	\$1,190,599	\$485,046	\$1,675,645
2020	58	\$3,468,328	\$1,638,506	\$5,106,834
2019	21	\$1,727,550	\$484,421	\$2,211,971
2018	17	\$1,091,040	\$374,400	\$1,465,440
2017	3	\$335,484	\$106,954	\$442,438
2016	0	\$0	\$0	\$0
2015	7	\$455,469	\$174,693	\$630,162
2014	12	\$875,871	\$274,611	\$1,150,482
2013	103	\$6,413,684	\$2,855,040	\$9,268,724
2012	14	\$870,063	\$296,365	\$1,166,428
2011	46	\$2,429,509	\$896,993	\$3,326,502
2010	61	\$3,161,943	\$1,031,223	\$4,193,166
2009	72	\$2,909,369	\$1,015,918	\$3,925,287
2008	29	\$1,153,651	\$566,708	\$1,720,359
2008-2022	488	\$28,026,821	\$11,061,365	\$39,088,186

Gloucester County Commissioner Director Frank J. DiMarco has announced that, as the County enters the second year of a committed three-year spending freeze in 2024, the County's tax rate will be cut for the third consecutive year.

The County tax rate fell by 7.21 cents this year, exceeding the decreases of 1.06 cents in 2021 and 4.40 cents in 2022. In total, Gloucester County taxpayers have seen their County tax rate fall by 12.67 cents over three years.

"In August of last year, I urged the Board to adopt a resolution to keep spending flat for three years," noted Director DiMarco. "We tasked County Administrator Chad Bruner and his team with

accomplishing this spending freeze while maintaining the level of services provided to residents, including services for seniors, veterans, emergency responders, and special needs residents."

The reduction in County taxes has largely been achieved by continuing to reduce the size of government, a trend that the County has been committed to since 2008 and has been able to achieve largely through attrition, implementing public-private partnerships to ensure effective and cost-efficient delivery of services, and utilizing contracted services and temporary employees to maximize flexibility. This has resulted in more than \$39 million in savings, a number that continues to compound and grow each year.

FLU SHOT CLINICS CONTINUE

The Gloucester County Department of Health reminds residents that the County's free flu shot program continues and of the importance of keeping our families and communities healthy during flu season. Upcoming dates and locations are listed below. The County offers a variety of options for the convenience of residents:

- Drive-through clinics help those residents who have difficulty walking or standing in lines get their shot.
- Designated preschool/daycare/family clinics are scheduled for families with children 18 years and younger. All family members can get vaccinated at the same time.
- Clinics are scheduled on weekdays, weekends, and during evening hours.

New for the 2023-2024 influenza season, registration has gone electronic! There are no paper registration forms and pre-registration is strongly encouraged. To register or for more information, visit www.gloucestercountynj.gov/334/influenza, scan the QR code, or call (856) 218-4101.



Monday, October 16

4:30pm – 6pm
Gloucester County Institute of Technology
1360 Tanyard Road
Sewell

Tuesday, October 17

5pm – 6:30pm
Drive-through clinic
Gloucester County Fleet Management
(Public Works Bays)
45 Lenape Avenue
Mantua

Saturday, October 21

9am – 10:30am
Pitman United Methodist Church
758 North Broadway
Pitman

Saturday, October 21

11:30am – 1pm
Gloucester County Library
389 Wolfert Station Road
Mullica Hill

Monday, October 23

4:30pm – 6pm
Preschool/daycare/family clinic
Gloucester Co. Health Department
204 East Holly Avenue
Sewell

Tuesday, October 24

4pm – 5:30pm
Samuel Mickle School
559 Kings Highway
Mickleton

Thursday, October 26

5:30pm – 7pm
Drive-through clinic
Clayton County Complex
1200 North Delsea Drive
Clayton

Monday, October 30

4:00pm – 5:30pm
Woodbury High School
25 North Broad Street
Woodbury

Thursday, November 9

4:30pm – 5:30pm
Woodbury Heights Community Center
741 Helen Avenue
Woodbury Heights

Monday, November 13

10am – 11am
South Harrison Municipal Building
664 Harrisonville Road
Harrisonville

Monday, November 13

1pm – 2pm
Newfield Public Library
115 Catawba Avenue
Newfield

Wednesday, November 15

11am – 12pm
Elk Township Municipal Building
680 Whig Lane
Monroeville

Monday, November 20

5pm – 6pm
Monroe Township Public Library
713 Marsha Avenue
Williamstown

Tuesday, November 21

4:30pm – 5:30pm
Westville Community Center
1035 Broadway
Westville

Monday, November 27

4:30pm – 6 pm
Preschool/daycare/family clinic

Gloucester Co. Health Department
204 East Holly Avenue
Sewell

Tuesday, November 28

4:30pm – 5:30pm
Preschool/daycare/family clinic
WIC Office
115 Budd Boulevard
West Deptford

Wednesday, November 29

12pm – 1pm
Franklin Township Community Center
1548 Coles Mill Road
Franklinville



SENIOR ART CLASSES

Gloucester County's seniors are encouraged to discover their artistic side and enjoy good company during free acrylic painting classes that are offered at the County's senior nutrition sites. These classes are open to all Gloucester County residents aged 60 and above at no charge and all materials are provided. The following upcoming classes are available:

Thursday, October 19

10:00am
Thorofare Fire Hall
100 Firehouse Road
Thorofare

Thursday, October 26

10:00am
Pfeiffer Community Center
301 Blue Bell Street
Williamstown

Thursday, November 2

10:00am
First Baptist Church of Jericho
981 Mail Avenue
Deptford

Thursday, November 9

10:00am
Second Baptist Church
1540 Swedesboro Avenue
Paulsboro

Pre-registration is required.
To register, please email
seniors@co.gloucester.nj.us
or call (856) 384-6900.



SENIOR HALLOWEEN PARTIES

The Gloucester County Division of Senior Services has announced the dates for the upcoming Senior Halloween Parties, which will take place on **Wednesday, October 25** and **Thursday, October 26**. Both parties will take place from 11:00am to 2:30pm at The Estate at Monroe, located at 1351 North Black Horse Pike in Williamstown. Tickets are required and are available while supplies last for \$2 at the Division of Senior Services, located at 115 Budd Boulevard in West Deptford, or at any of the County's senior nutrition sites.



For more information please visit
www.gloucestercountynj.gov/303/Seniors,
scan the QR code, or call (856) 384-6900.



FIRE ACADEMY IMPROVEMENTS UNDERWAY

The County of Gloucester recently secured a grant from the State of New Jersey that provides \$3 million to be utilized on improvement projects at the Gloucester County Fire Academy in Clarksboro. Commissioner Denice DiCarlo, liaison to the Office of Emergency Management, has announced that a variety of improvements to the buildings and training grounds are underway to better serve our County Fire Services and thus our residents.

New Apparatus/Instructional Building Addition

This new 140' x 60' pole barn style building will include:

- Two new classrooms, each 30' x 35' and accommodating 40 students, with new training tables and audiovisual equipment
- New restroom facilities including showers
- Large apparatus room to accommodate Academy training apparatus, County foam tender, and an indoor training area
- Instructor room

New Live-Fire Training Props

A Car Fire Simulator will provide advanced live fire training. Fires are fueled using environmentally friendly propane (LPG). The system is fully integrated with independently controlled burners to provide optimal control of individual fire scenarios, including engine fires, forward and rear passenger fires, wheel fires, and tank rupture fires.

Class "A" Live-Fire Training Building

The new four-story Live-Fire Training Building will contain five burn chambers and interior and exterior stairwells on all levels to enhance firefighter training scenarios. The new facility will allow firefighters to perform several new training initiatives that previously had to be performed off-site, resulting in reduced training time. In addition to live-fire training, the building will offer additional training capabilities for search and rescue, ladder placement, roof ventilation, and confined space rescue.

VETERANS DAY CEREMONY TO BE HELD NOVEMBER 10

The Gloucester County Board of Commissioners, along with the Rowan College of South Jersey Gloucester Campus chapter of the Student Veterans of America Club, will host their annual Veterans Day celebration on **Friday, November 10** at 10:00am. The event will take place in the Physical Education Center on the Rowan College of South Jersey's Gloucester Campus, located at 1400 Tanyard Road in Sewell. Commissioner Denice DiCarlo, liaison to the Gloucester County Office of Veterans Affairs, invites all residents to attend the celebration, which is free and open to the public.

INAUGURAL VETERANS JOB FAIR TO BE HELD ON NOVEMBER 3

The Gloucester County Board of Commissioners, Gloucester County Department of Economic Development and the Gloucester County Workforce Development Board, in collaboration with the Gloucester County Office of Veterans Affairs, have announced that they will host the County's first ever Veterans Job Fair and Resource Event. This event will take place on **Friday, November 3**, from 9:00am to 12:00pm, at Rowan College of South Jersey's Eugene McCaffrey College Center, located at 1400 Tanyard Road in Sewell (parking will be available in Lot E).

This job fair specifically targets military veterans, spouses, and dependents who are looking for new career opportunities in Gloucester County. Following the job fair, lunch will be served in RCSJ's cafeteria from 12:30pm to 1:30pm.

Commissioner Director Frank J. DiMarco commented, "As a Board and as a community, we greatly value our military veterans and their service. This innovative fair - which is the result of strong collaboration across County departments - is the latest way that we look to support our veterans and their families."

For more information regarding the job fair, please contact the Office of Veterans Affairs by phone at (856) 401-7660 or by email at vets@co.gloucester.nj.us.



EARN YOUR CNA OR LPN

The Gloucester County Board of Commissioners, in collaboration with Rowan College of South Jersey (RCSJ) and the Gloucester County Workforce Development Board, recently celebrated the launch of the Gloucester County Allied Health Program, a new program designed to provide a free education to aspiring Certified Nursing Assistants (CNA) and Licensed Practical Nurses (LPN) while ensuring that seniors residing in Gloucester County's nursing homes receive the highest level of care for years to come.

At the successful completion of the program, graduates who earn their state licensure will be eligible for open positions in care facilities throughout Gloucester County. Vacancy preference will be given to the Gloucester County Shady Lane Nursing Home - a 60-bed, long-term care facility in Clarksboro that has been a part of Gloucester County's tradition since the 1800s.

For more information about earning your CNA or LPN certificate for free through the Gloucester County Allied Health Program, visit RCSJ.edu/GCHealth or scan the QR code.



Public Works Continued from page 2



Accessible sidewalk ramp installation on Hessian Avenue at the intersections of Harker Avenue and Woodlane Drive in West Deptford

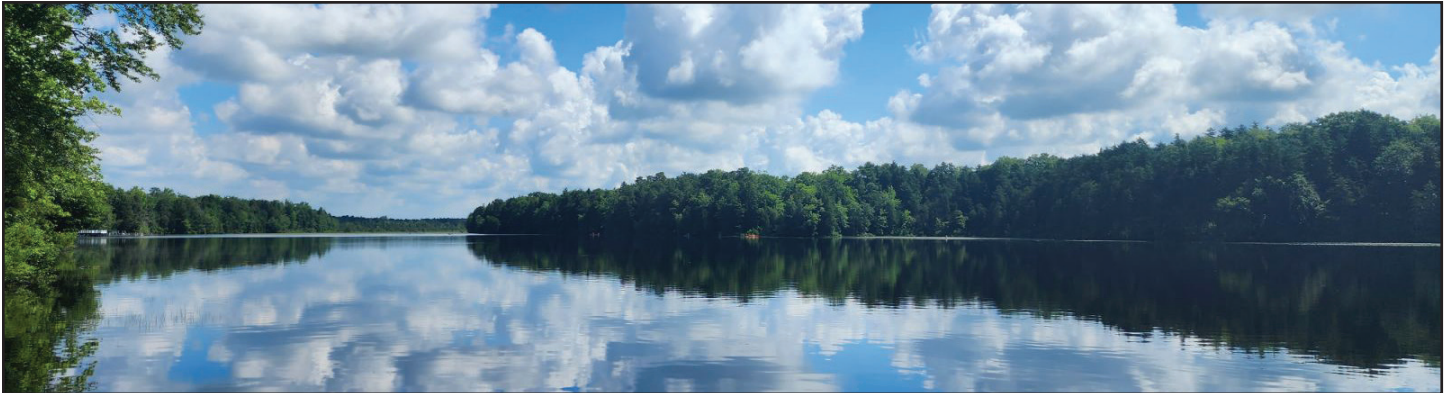
If you see an issue on a County-owned property or roadway that requires maintenance or repair, please report it by emailing publicworks@co.gloucester.nj.us or calling (856) 307-6400.

SENIOR PICNIC A SMASHING SUCCESS

On Tuesday, September 19, nearly 2,000 of our senior residents gathered at Red Bank Battlefield for the annual Gloucester County Senior Picnic. Attendees enjoyed an afternoon of fun, friendship, music, and dancing. The Gloucester County Health Department's Mobile Health Outreach Van was also on hand to help connect attendees with resources and services.



FALL FUN AT OUR COUNTY PARKS



As temperatures cool, there is still plenty of fun in store at our County parks. In addition to simply exploring on your own with family and friends, check out these activities.

ACTIVITIES AT SCOTLAND RUN

Programming for all ages continues this fall at Scotland Run Park Nature Center, located at 980 East Academy Street in Clayton. **Pre-registration is required.**

Discovery Walk

Tuesday, October 24, 9:30am - 10:30am

Explore the trails of Scotland Run Park with the Park Naturalist.

To register, visit www.gloucestercountynj.gov/1091/guided-trail-walks or scan the QR code.



Adult Naturalist Program

Thursday, October 26, 9:30am - 11:30am

Thursday, November 9, 9:30am - 11:30am

Learn more about Gloucester County's local wildlife and how you can help conserve biodiversity in your own yard.

To register, visit www.gloucestercountynj.gov/1370/adult-naturalist-program or scan the QR code.



Nature Tots

Tuesday, October 31, 9:30am - 10:30am

Tuesday, November 14, 9:30am - 10:30am

These free lessons for children explore a wide variety of nature topics and each includes a related craft.

To register, visit www.gloucestercountynj.gov/707/nature-tots or scan the QR code.



Fall Paddles

Thursday, November 2, 9:30am - 11:30am

Thursday, November 16, 9:30am - 11:30am

Explore Wilson Lake on a guided canoe and kayak tour!

To register, visit www.gloucestercountynj.gov/1089/fall-paddles or scan the QR code.



18th Century Field Day

On **Sunday, October 22**, from 10:00am - 3:00pm, Red Bank Battlefield, located at 100 Hessian Avenue in National Park, will come alive with history for the annual 18th Century Field Day. Attendees can enjoy living history demonstrations, meet Revolutionary War soldiers, and more. Tour the battlefield, enjoy vendors, food, and fun, and cheer on the Jonas Cattell Run participants at the finish line. This event is free to attend and open to the public. The rain date for this event is **Sunday, October 29**.

Jonas Cattell 10 Mile Run

Also on **Sunday, October 22**, at 8:00am, runners can enjoy the annual Jonas Cattell Run, which starts at Mechanic Street and Kings Highway in Haddonfield and ends at Red Bank Battlefield in National Park, where it kicks off the 18th Century Field Day celebration. All registered participants will receive a shirt and the top three runners in each age group will receive a medal. **This event is rain or shine and pre-registration is required.**

Ft. Mercer 5K Run

Runners looking for a shorter distance can check out the Ft. Mercer Run, which also takes place on **Sunday, October 22**, at 8:00am. This run starts and ends at Red Bank Battlefield and loops through Historic National Park. All runners will receive a shirt and the top three runners in each age group will receive a medal. **This event is rain or shine and pre-registration is required.**

For more information about these events and to register for the runs, please visit www.gloucestercountynj.gov/740/special-events or scan the QR code.



GLOUCESTER COUNTY BOARD OF COMMISSIONERS

Frank J. DiMarco, *Director*
Heather Simmons, *Deputy Director*
Lyman Barnes
Nicholas DeSilvio
Denice DiCarlo
Jim Jefferson
Christopher Konawel Jr.

FALL FITNESS FOR OLDER ADULTS

The Gloucester County Department of Health offers both Tai Chi and Chair Yoga programs this Fall. Both programs are designed for older adults and offer gentle exercises that will help participants relax and improve their well-being.

Tai Chi

Sessions are offered at Pitman United Methodist Church, located at 758 North Broadway in Pitman from 2:00pm to 3:00pm.

- Monday, October 16
- Monday, October 23

Pre-registration is required. For additional information and to register, please email ckephart@co.gloucester.nj.us or call (856) 218-4106.

Chair Yoga

Sessions are offered at Cross Keys United Methodist Church Faith Hall, located at 1648 North Main Street in Williamstown from 2:00pm to 3:00pm.

- Monday, October 30
- Monday, November 6
- Monday, November 13
- Monday, November 20

Pre-registration is required. For additional information and to register, please email mwengert@co.gloucester.nj.us or call (856) 218-4108.

For more information about adult fitness programs offered by the Gloucester County Department of Health, please visit www.gloucestercountynj.gov/1394/Adult-Fitness-Programs or scan the QR code.



CANDLELIGHT VIGIL HONORS LIVES LOST TO OVERDOSE



On Tuesday, August 29, Gloucester County hosted its 8th Annual Candlelight Memorial Vigil at James G. Atkinson Park in Sewell. The event was dedicated to 81 individuals who have lost their lives to overdose, as well as the family and friends who have been deeply affected by their loss.

FOR WEEKLY UPDATES FROM GLOUCESTER COUNTY, SUBSCRIBE TO CONSTANT CONTACT

Receive all things happening in Gloucester County straight to your inbox. Scan the QR Code, email socialmedia@co.gloucester.nj.us or call (856) 853-3271 to subscribe.

To scan the QR Code: Open up the camera app on your smartphone and point to the QR Code. Click the notification on your screen to open the website on your phone.



♻️ Please recycle our newsletter after use- thank you for doing your part! ♻️

The County of Gloucester complies with all state and federal rules and regulations against discrimination in admission to, access to, or operations of its programs, services, and activities. In addition, the County encourages participation of people with disabilities in its programs and activities and offers special services to all residents 60 years of age and older. Inquiries regarding compliance may be directed to the County's ADA Coordinator at (856) 384-6842/ New Jersey Relay Service 711.